

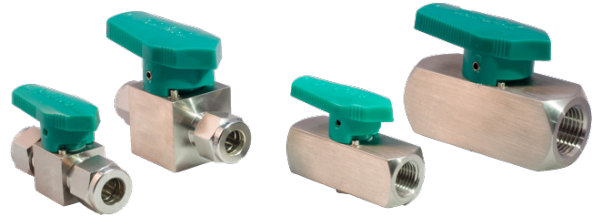
INSTRUMENTATION VALVES

PAC Stainless can provide you with the complete line of quality-assured valves for all of your flow control needs. All pressure ratings are approximate and for illustration purposes only. Values are not guaranteed or warranted.

BALL VALVES

Sizes	Temperature Range	Max. Pressure Rating
1/8"-1"	-40°F-450°F	10,000 psig

This versatile valve solution is available in two way and angled (shut-off), and three way (switching) designs. There are 12 different styles of ball valves available with various end connection options.



NEEDLE VALVES

Sizes	Temperature Range	Max. Pressure Rating
1/8"-1"	-40°F-450°F	10,000 psig

Needle valves provide shut-off and flow regulation in analytical instrumentation and process systems. Straight and angle pattern options are available in a wide range of end connection, stem, o-ring, and material configurations.



METERING VALVES

Sizes	Temperature Range	Max. Pressure Rating
1/16"-3/8"	-40°F-450°F	2,000 psig

For use in analytical instrumentation and other applications where fine flow metering capabilities are required. 1°, 3°, and 6° stem taper angles can be selected for different sensitivity levels of flow control. Panel mounting can be achieved with no handle removal.



PLUG VALVES

Sizes	Temperature Range	Max. Pressure Rating
1/8"-1/2"	-10°F-400°F	3,000 psig

Plug valves provide low-torque, quarter-turn actuation, making them an ideal solution where repeated manual actuation is required. Compact and lightweight, these plug valves can be mounted close together, allowing for great use in small spaces.



ALSO AVAILABLE

Quick Connects, Check Valves, Toggle Valves, Manifold Valves, and more. Please contact us for a full catalog and detailed product specifications.