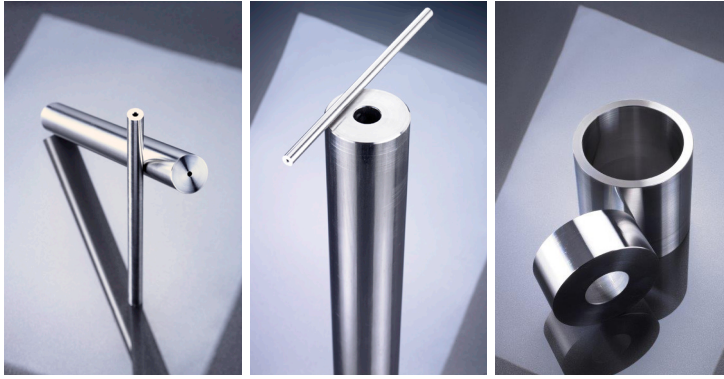


# HIGH-PRESSURE FLUID SYSTEM COMPONENTS



PAC Stainless supplies the tubing and accessories that are required for high-pressure applications. Medium pressure (up to 20,000 PSI), high pressure (30,000 through 60,000 PSI), and ultra-high pressure (90,000 PSI) solutions are offered for tubing valves and fittings. Tubes are provided in random lengths between 20' and 27' long and are available in 316L, HP120™, and HP160™.

## PRODUCT SPECIFICATIONS

ASTM A213, ASTM A269 (CHEMISTRY ONLY)

## MECHANICAL PROPERTIES & FABRICATION

All tubing is seamless, austenitic, 1/8 hard, cold-drawn, tested and inspected to meet maximum strength and performance. All parts are designed in accordance to the high pressure valve industry standard practices. Pressure boundary component wall thickness are designed in accordance with ASME B31.3 Chapter IX, High Pressure Piping, Equation 35b.

Nominal OD	Pressure Type	OD	ID	Min AWP
1/4"	Ultra-High	.243"/.250"	.079"/.083"	90,000
1/4"	High	.243"/.250"	.079"/.083"	60,000
1/4"	Medium	.243"/.250"	.104"/.109"	20,000
3/8"	Ultra-High	.365"/.375"	.121"/.125"	90,000
3/8"	High	.365"/.375"	.121"/.125"	60,000
3/8"	Medium	.365"/.375"	.198"/.203"	20,000
9/16"	High	.552"/.563"	.182"/.187"	60,000
9/16"	High	.552"/.563"	.245"/.250"	40,000
9/16"	Medium	.552"/.563"	.307"/.312"	20,000
9/16"	Medium	.552"/.563"	.354"/.359"	15,000
3/4"	High	.740"/.750"	.245"/.250"	60,000
3/4"	Medium	.740"/.750"	.432"/.437"	20,000
3/4"	Medium	.740"/.750"	.510"/.515"	15,000
1"	High	.990"/1.000"	.432"/.437"	60,000
1"	Medium	.990"/1.000"	.557"/.562"	20,000
1"	Medium	.990"/1.000"	.682"/.687"	15,000

All pressure ratings are approximate and for illustration purposes only. Values are not guaranteed or warranted.

## TYPICAL APPLICATIONS

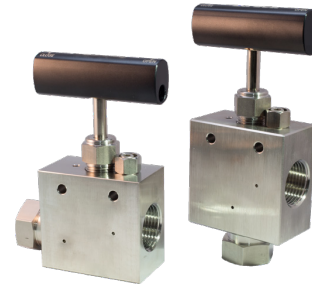
Oil & Gas  
Surface & Subsea  
Hydraulic  
Test Benches  
Waterjet Cutting  
Chemical Injections & Sampling

## FITTINGS AND VALVES

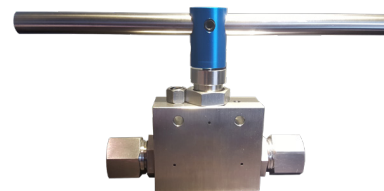
Feature	Detail
Connection Type	Variety
Connection Size	.250"-1.500"
MAWP	60,000 PSI
Pipe Fittings MAWP	≤ 15,000 PSI
Cone & Thread MAWP	≤ 60,000 PSI
Material	316 cold worked stainless steel. Special alloys are available.



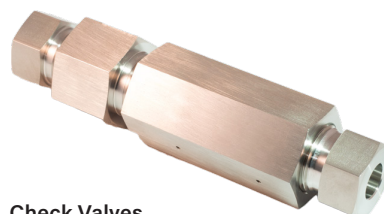
Fittings & Adapters



Needle Valves



Ball Valves



Check Valves